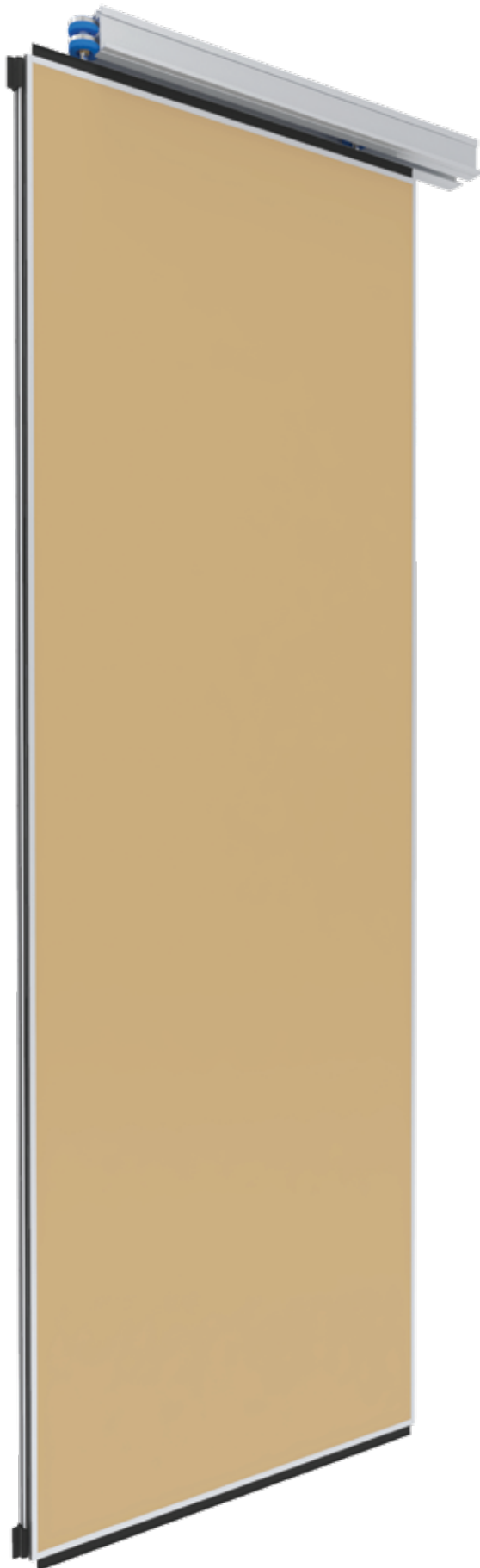


 sandeirpartitions

OPERABLE WALL





PANEL TYPE

SC 65 - STC 39

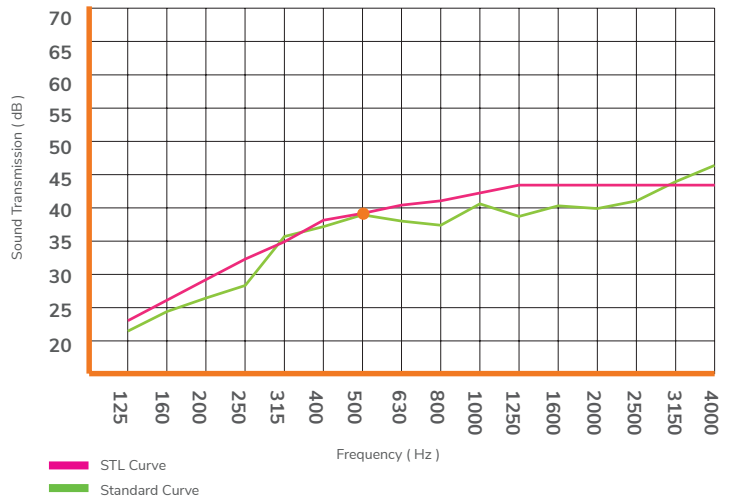
- STC value 39 (STC : Sound transmission class)
- Partition thickness of 65 mm, with a maximum height of 4000 mm.
- For restaurants, meeting rooms, classrooms that do not require high sound reduction specifications.

- Mempunyai nilai STC 39 (STC : Sound transmission loss)
- Tebal partisi 65 mm, dengan tinggi maksimal 4000 mm.
- Digunakan untuk restoran, ruang rapat, ruang kelas yang tidak membutuhkan spesifikasi pengurangan suara yang tinggi.

PANEL TYPE SC 65 - STC 39

Operation Methods	Maximum Size	
	Width	Height
Cross Type		
Ordinary	1200 mm	4000 mm
Parallel		
Induction		
Center Stacking 2 Runner		
R Type		
Center Stacking 1 Runner	900 mm	3000 mm

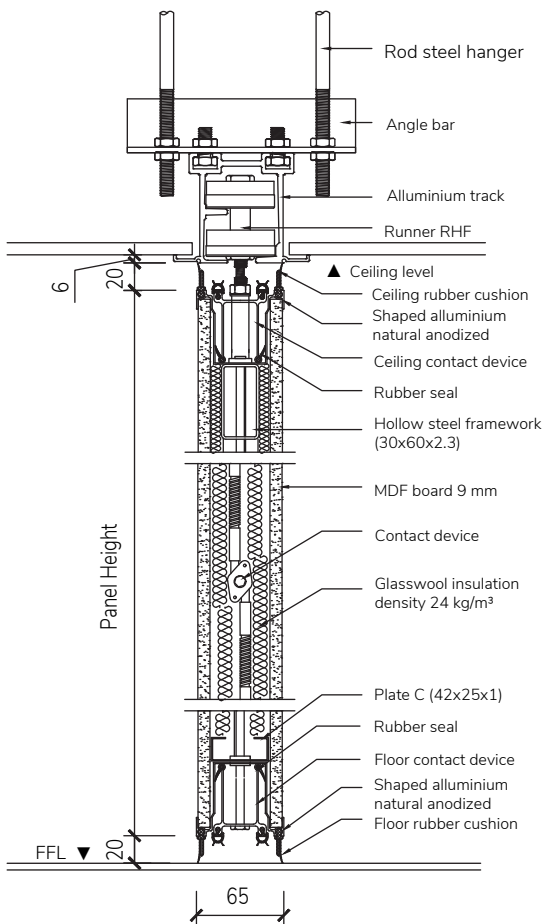
SOUND TRANSMISSION LOSS & STC RATING



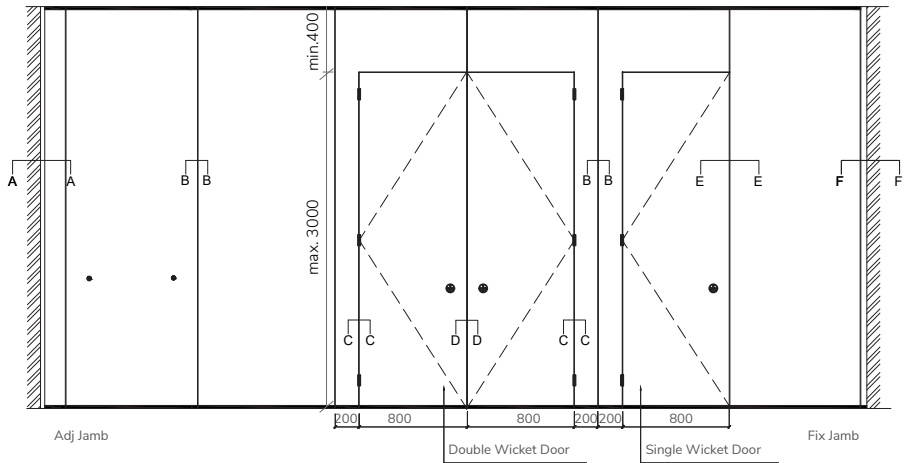
Weight Approximately : 28 kg/m²

SECTION DRAWING SC 65 - STC 39

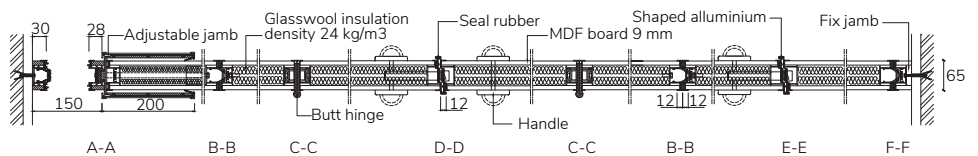
VERTICAL SECTION DRAWING



ELEVATION DRAWING

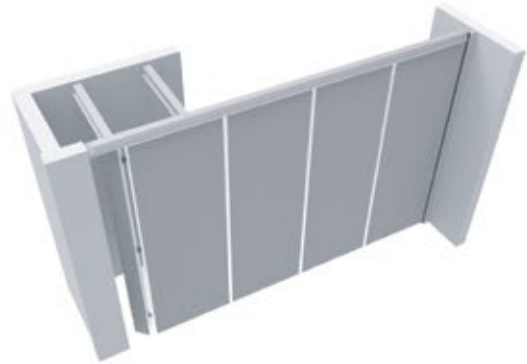


HORIZONTAL SECTION DRAWING

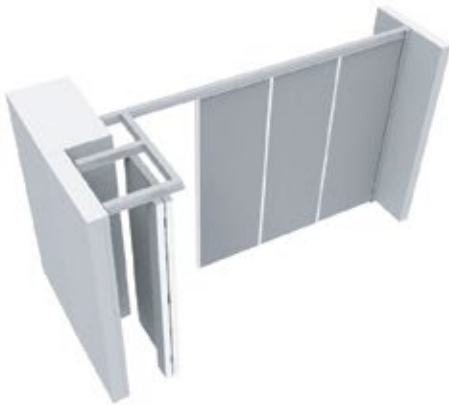




Ordinary Stacking



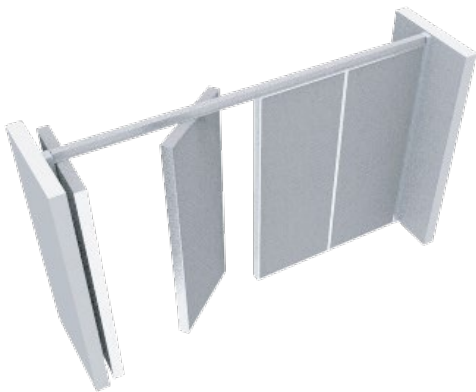
Parallel Stacking



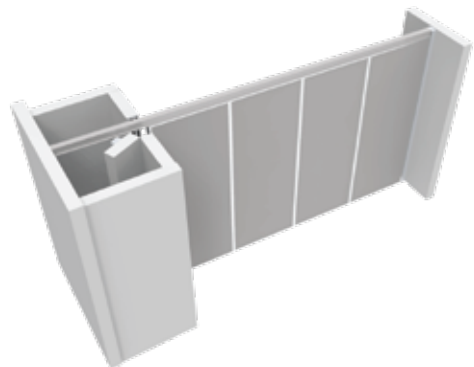
Induction Stacking



Center Stacking 2 Runners







Center Stacking with 1 Runner





Center Stacking 1 Runner with Storage & Door



CROSS TYPE

RHF - 200 kg	<p>Rails Aluminium anodized H-base 3-5 thk</p> <p>Runner Base : MC Blue Bearing : $\phi 32$ - 2pcs H. Density PTSE - bearing cover : $\phi 51$ - 2pcs Hanger bolt : Steel $\phi 12$</p>		
--------------	--	---	---

RHF - 300 kg	<p>Rails Aluminium anodized H-base 3-5 thk</p> <p>Runner Base : MC Blue Bearing : $\phi 40$ - 2pcs H. Density PTSE - bearing cover : $\phi 65$ - 2pcs Hanger bolt : Steel $\phi 14$</p>		
--------------	--	--	--

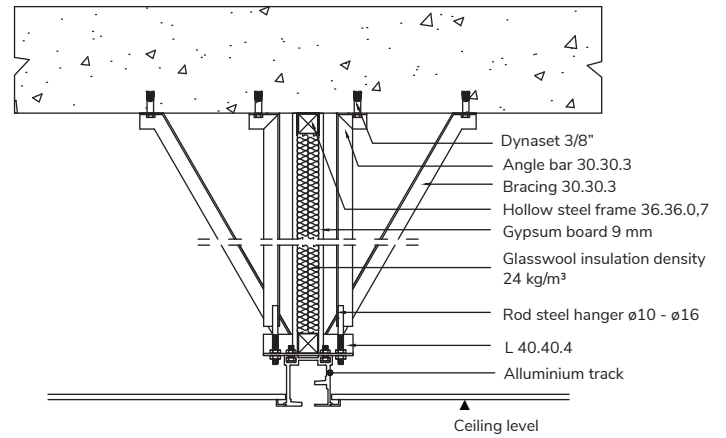
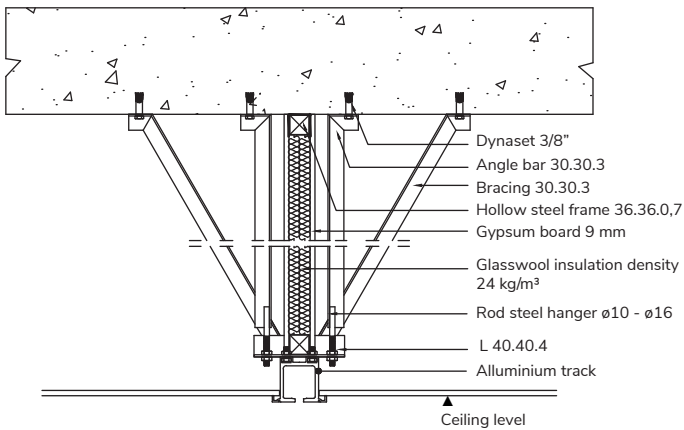
R - TYPE

R-120 kg	<p>Rails Aluminium anodized H-base 2-4 thk</p> <p>Runner Base : Aluminium Bearing : $\phi 28$ - 4pcs Hanger bolt : Base Ring Steel $\phi 12$ Fiber guide : MC Blue</p>		
----------	--	---	---

R-300 kg	<p>Rails Aluminium anodized H-base 6 thk</p> <p>Runner Base : Aluminium Bearing : $\phi 26$ - 4pcs $\phi 30$ - 4pcs Hanger bolt : Base Ring Steel $\phi 14$</p>		
----------	--	---	---

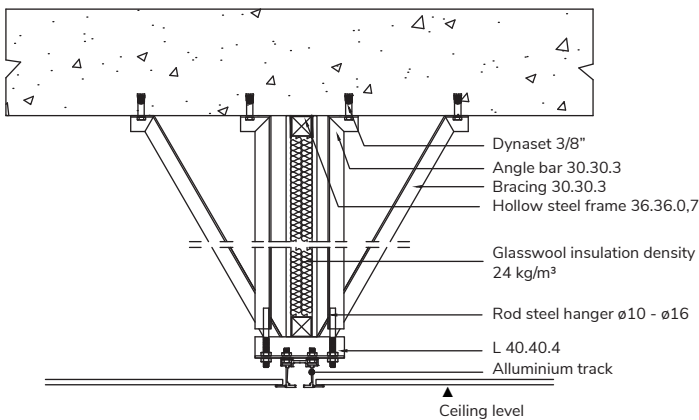
SOUND INSULATING ABOVE CEILING

SINGLE LAYER GYPSUM

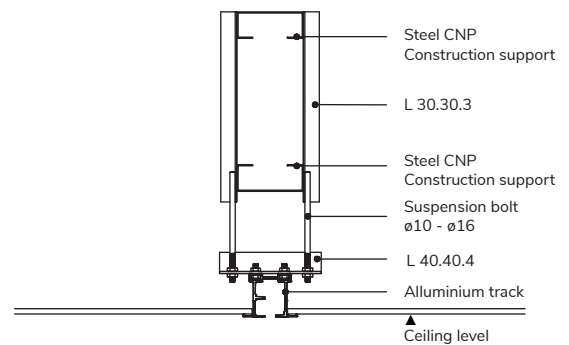


CONSTRUCTION SUPPORT

CONCRETE



NON CONCRETE



EXTRA FEATURE

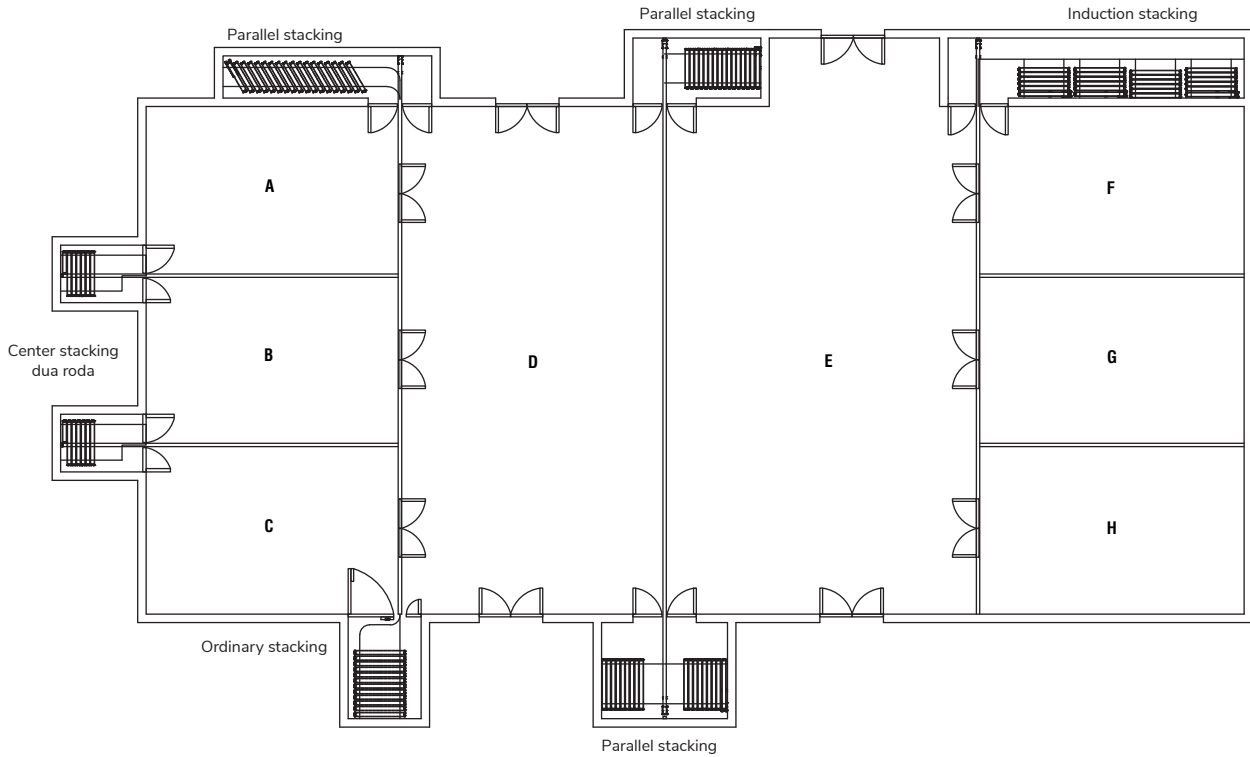


Door Handle

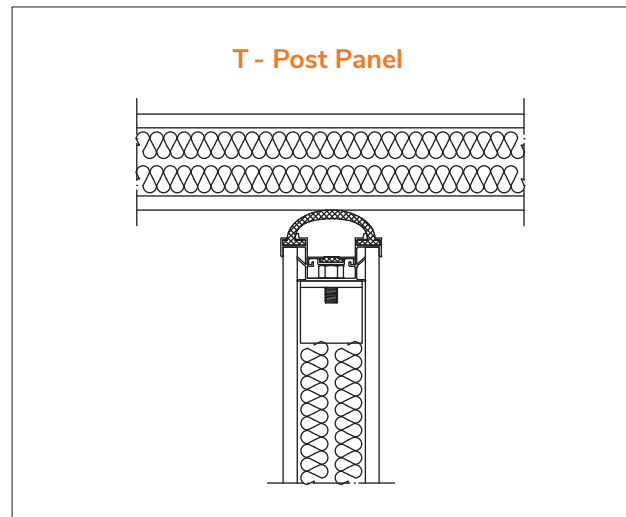
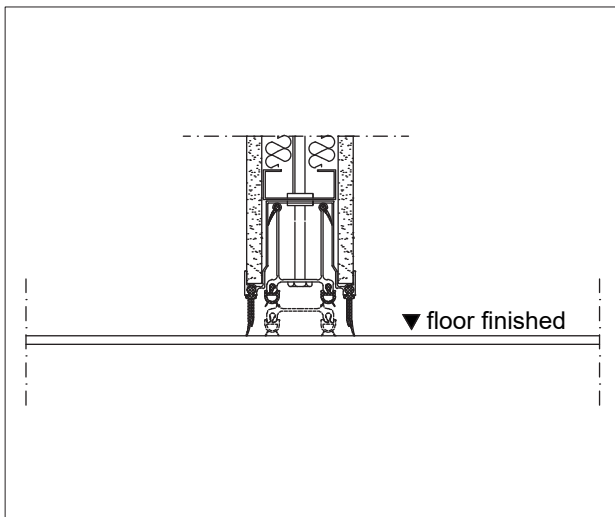
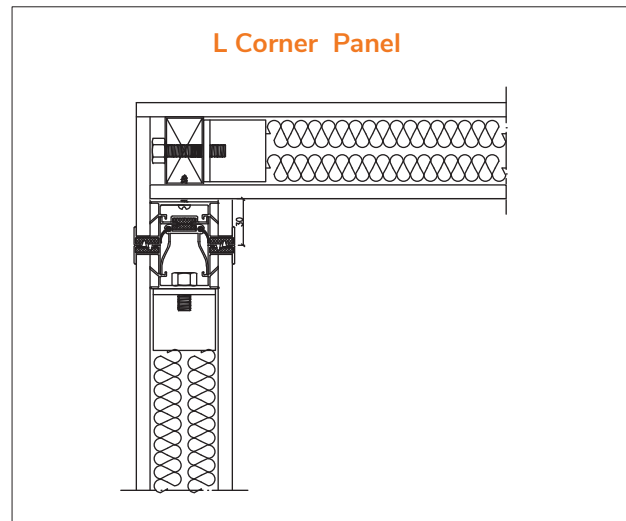
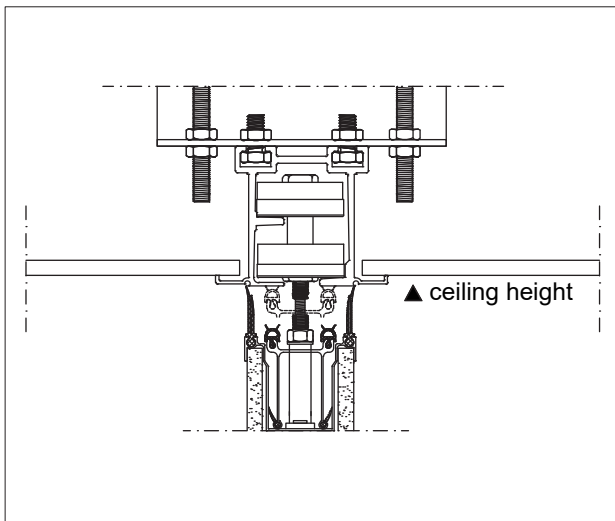


Crank Handle

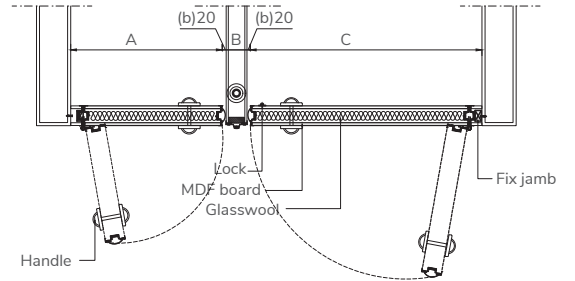
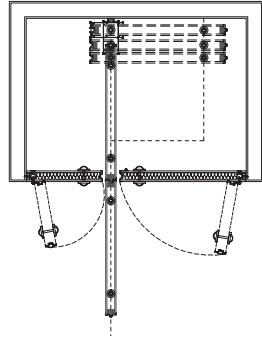
STACKING AREA OPTIONS



DETAIL

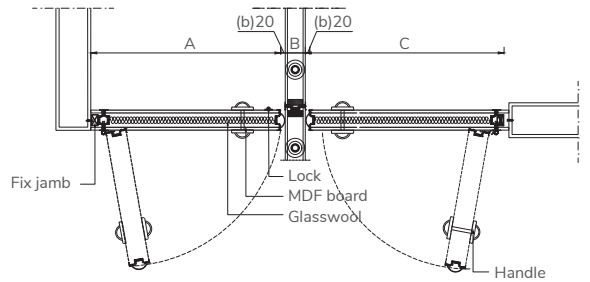
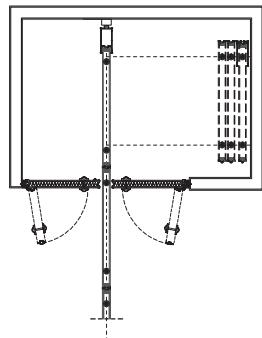


ORDINARY
STACKING



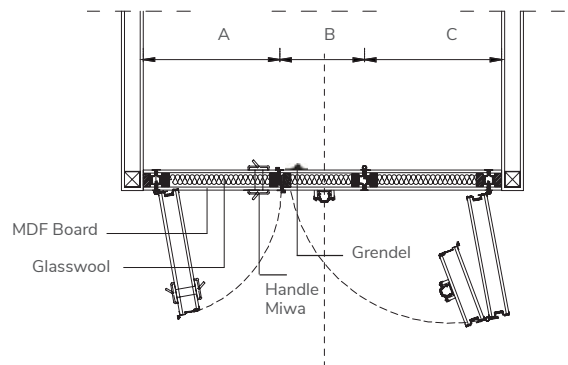
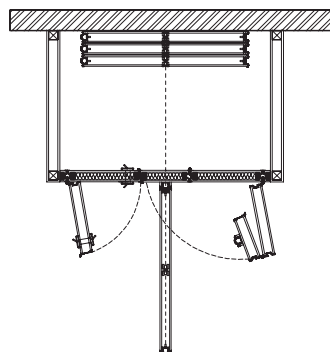
- $A \geq 300$
- $B = \text{Panel Thickness} + 40$
- $C \geq 300$

PARALLEL
STACKING



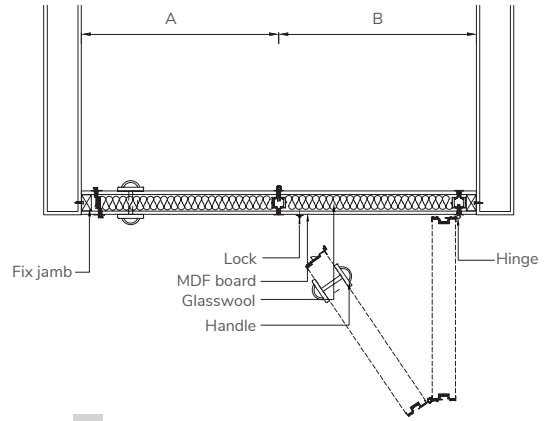
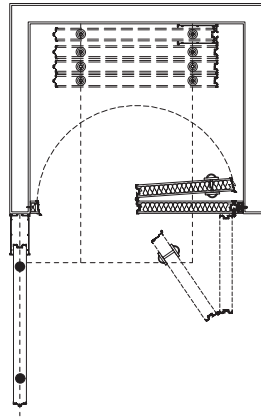
- $A \geq 300$
- $B = \text{Panel Thickness} + 40$
- $C \geq 300$

CENTER
STACKING



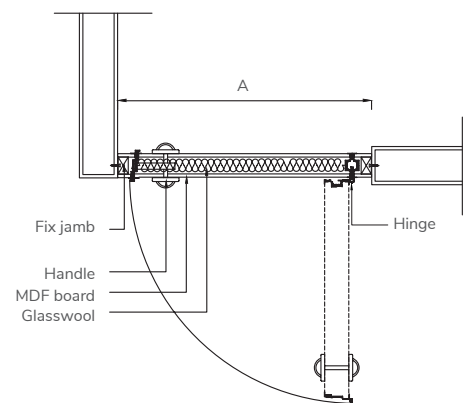
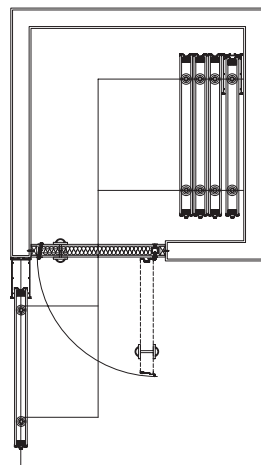
- $B = \text{Panel Thickness} + 40$
- $A \geq 300$
- $C \geq 300$

INDUCTION
STACKING A



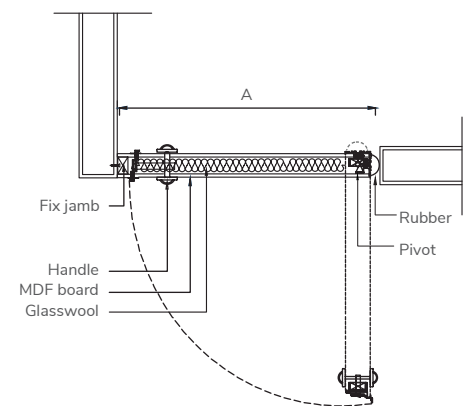
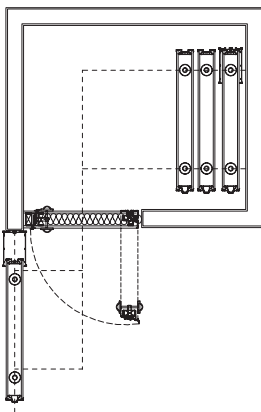
$A = B \geq 425$

INDUCTION
STACKING B
(HINGE STANDART)



$A \geq 800 \text{ max } 1200$

INDUCTION
STACKING B
(PIVOT HINGE)



$A \geq 800$







www.sandei.co.id

📷 sandei_official



Visit Our Website