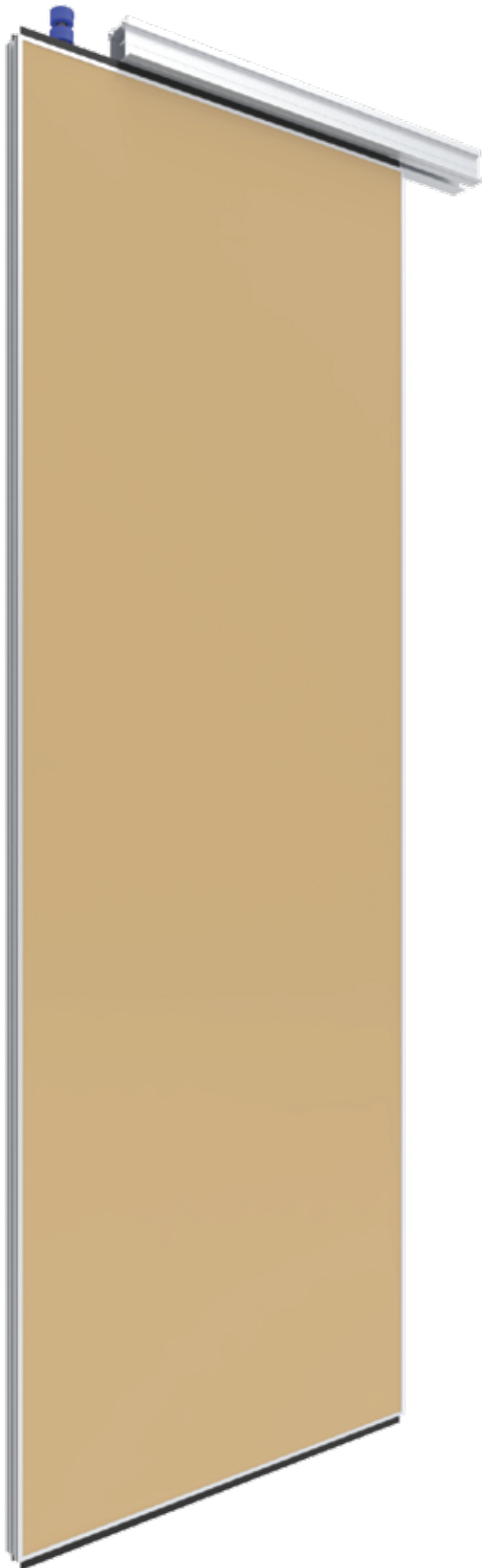


 sandeirpartitions

# OPERABLE WALL

---





## PANEL TYPE

### SC 50 - STC 30

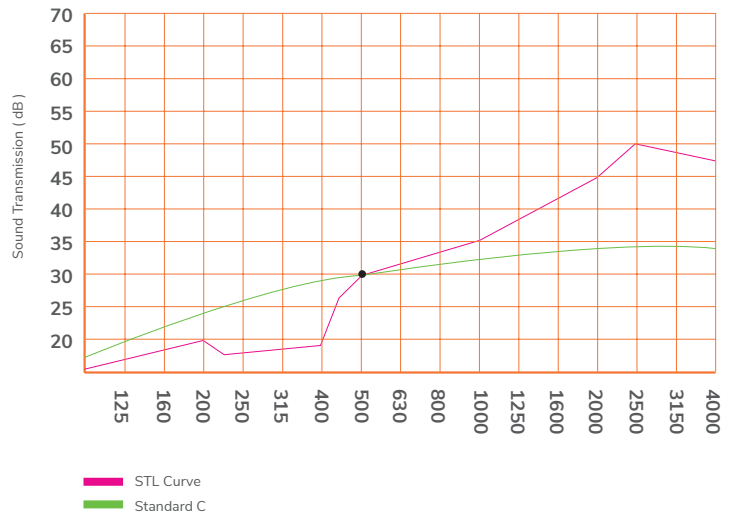
SC 50 offers flexibility of space for rooms that does not require high specification sound reduction, such as, restaurants, meeting rooms and classroom.

SC 50 menawarkan fleksibilitas untuk ruangan yang tidak membutuhkan spesifikasi pengurangan suara yang tinggi, seperti restoran, ruang meeting kecil dan ruang kelas.

# PANEL TYPE SC 50- STC 30

Operation Methods	Maximum Size	
	Width	Height
<b>Cross Type</b>		
Ordinary	1100 mm	3000 mm
Parallel		
Induction		
Center Stacking 2 Runner		
<b>R Type</b>		
Center Stacking 1 Runner	900 mm	3000 mm

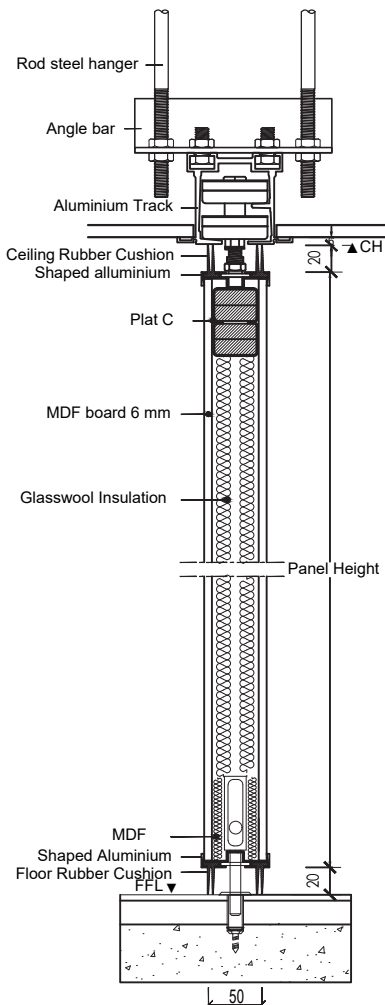
## SOUND TRANSMISSION LOSS & STC RATING



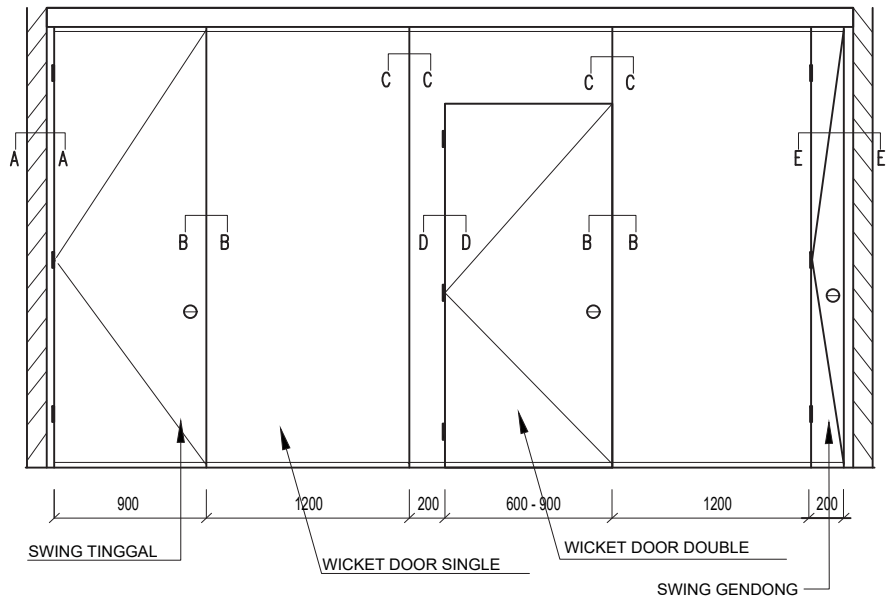
Weight Approximately : 20 kg/m<sup>2</sup>

# SECTION DRAWING SC 50 - STC 30

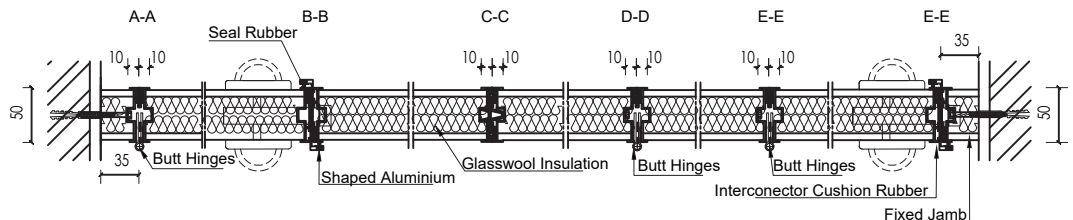
## VERTICAL SECTION DRAWING



## ELEVATION DRAWING

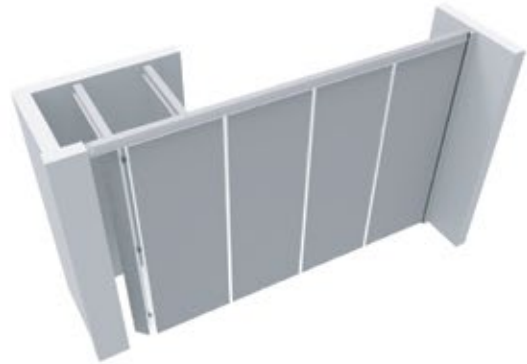


## HORIZONTAL SECTION DRAWING

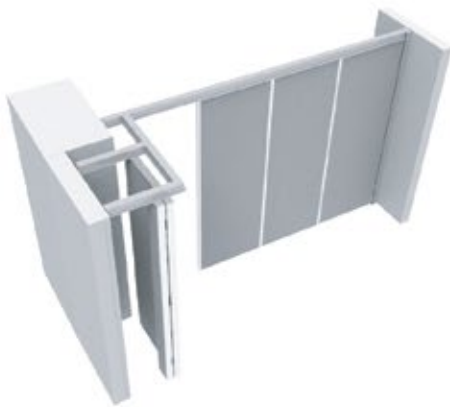




Ordinary Stacking



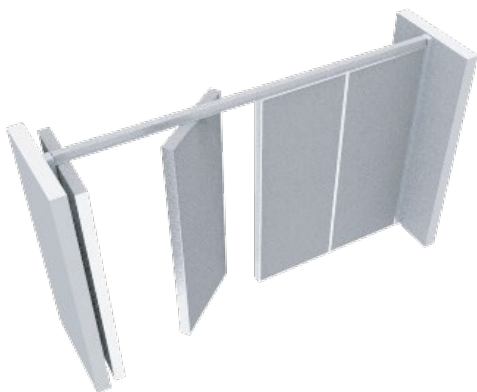
Parallel Stacking



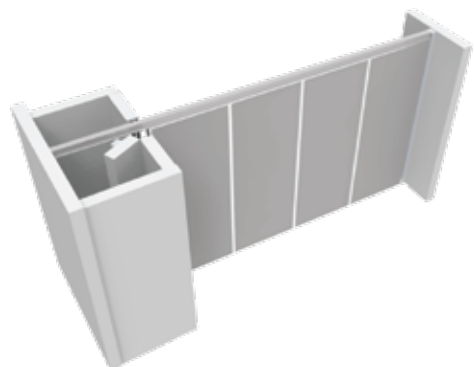
Induction Stacking



Center Stacking 2 Runners


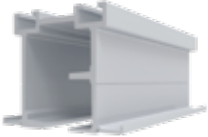


Center Stacking with 1 Runner







Center Stacking 1 Runner with Storage & Door

CROSS TYPE

RHF - 200 kg	<p><b>Rails</b> Aluminium anodized H-base 3-5 thk</p> <p><b>Runner</b> Base : MC Blue Bearing : <math>\phi 32</math> - 2pcs H. Density PTSE - bearing cover : <math>\phi 51</math> - 2pcs Hanger bolt : Steel <math>\phi 12</math></p>		
--------------	--	---	---

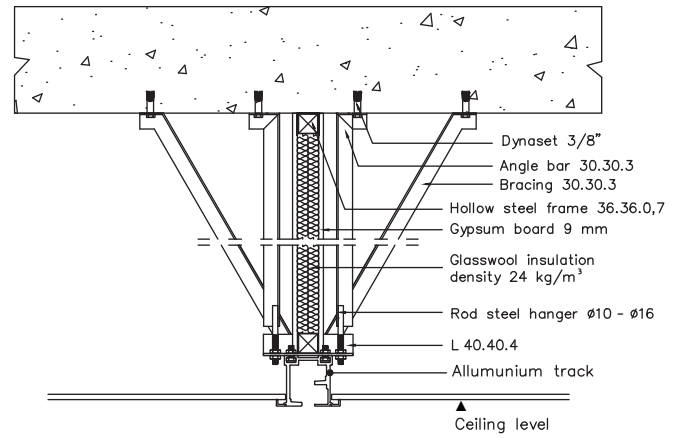
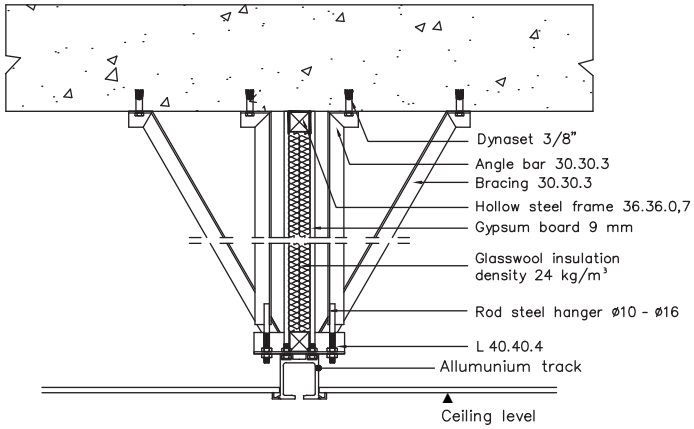
R - TYPE

R-120 kg	<p><b>Rails</b> Aluminium anodized H-base 2-4 thk</p> <p><b>Runner</b> Base : Aluminium Bearing : <math>\phi 28</math> - 4pcs Hanger bolt : Base Ring Steel <math>\phi 12</math> Fiber guide : MC Blue</p>		
----------	--	---	---

R-300 kg	<p><b>Rails</b> Aluminium anodized H-base 6 thk</p> <p><b>Runner</b> Base : Aluminium Bearing : <math>\phi 26</math> - 4pcs   <math>\phi 30</math> - 4pcs Hanger bolt : Base Ring Steel <math>\phi 14</math></p>		
----------	--	---	---

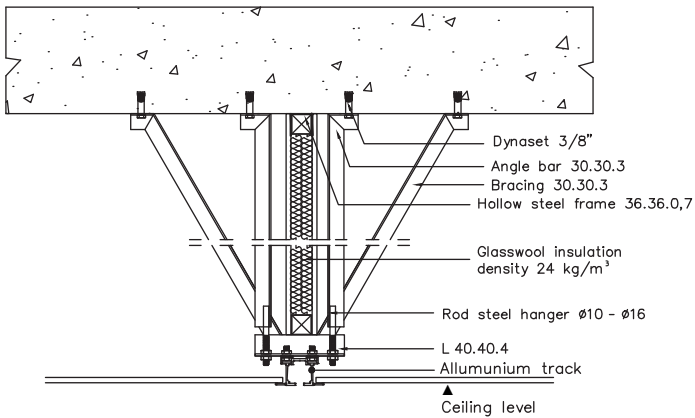
## SOUND INSULATING ABOVE CEILING

### SINGLE LAYER GYPSUM

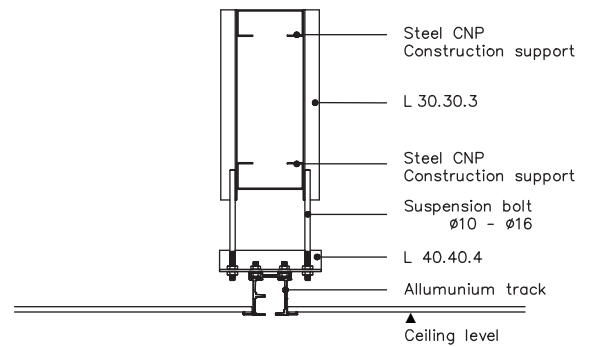


## CONSTRUCTION SUPPORT

### CONCRETE



### NON CONCRETE



## EXTRA FEATURE

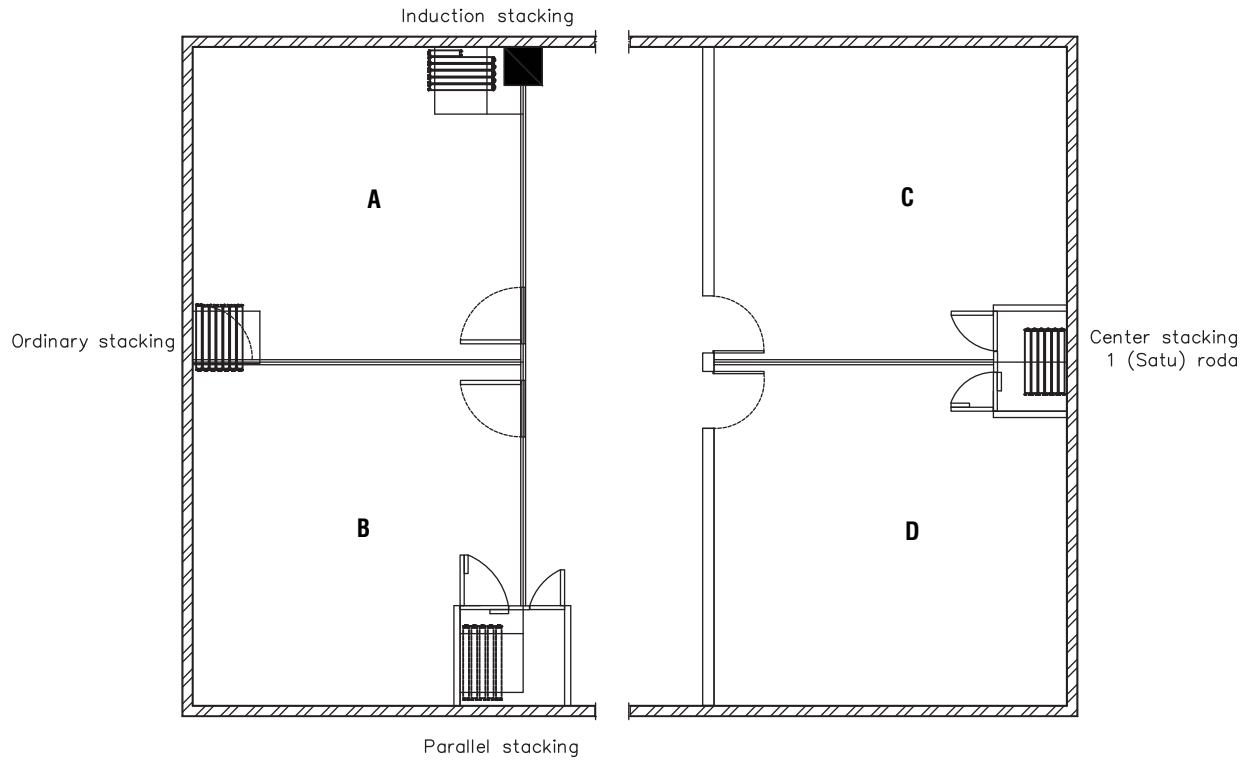
### Handle



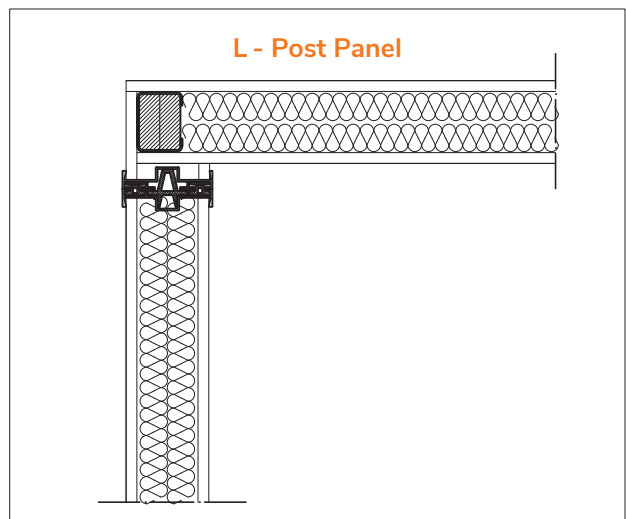
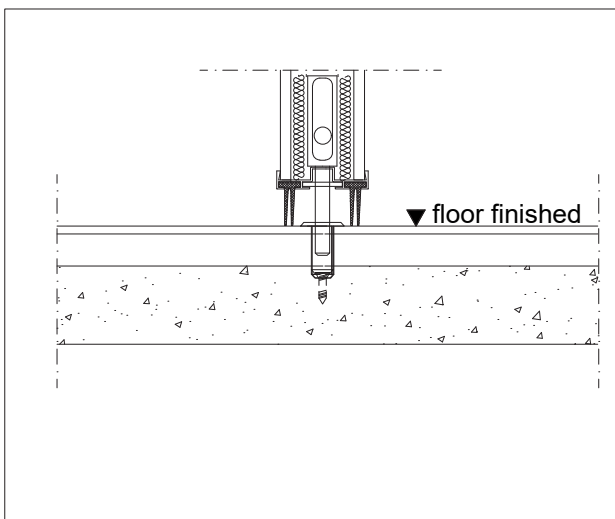
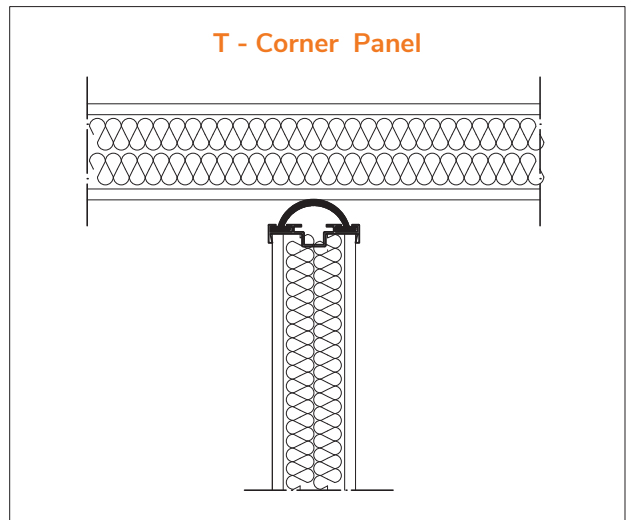
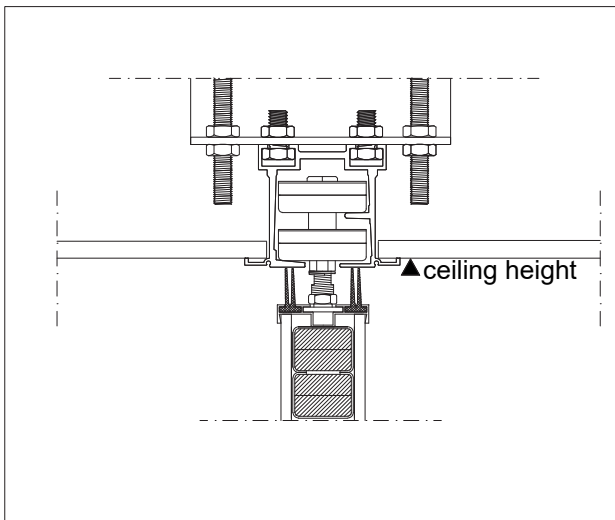
### Bolt



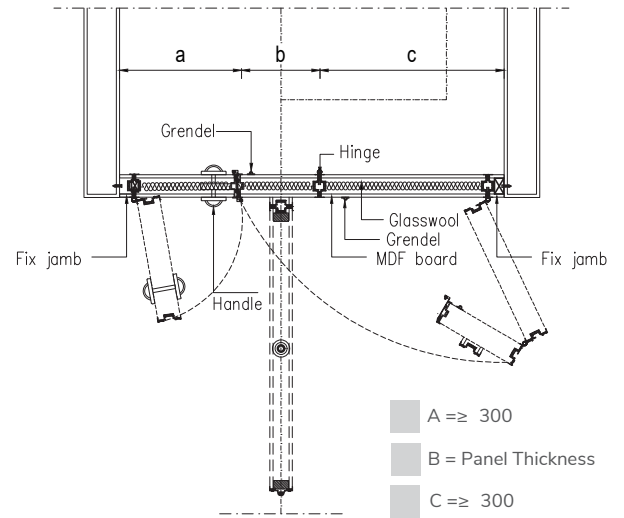
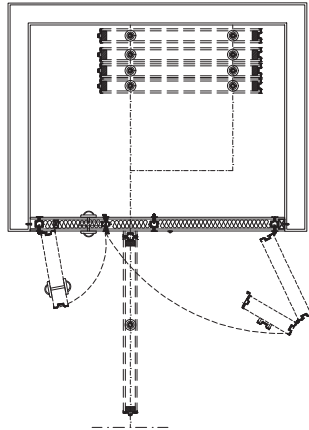
## STACKING AREA OPTIONS



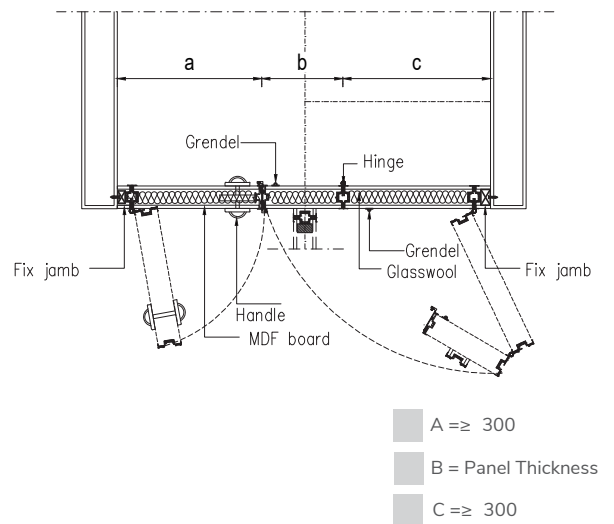
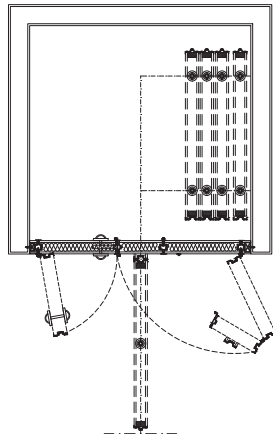
## DETAIL



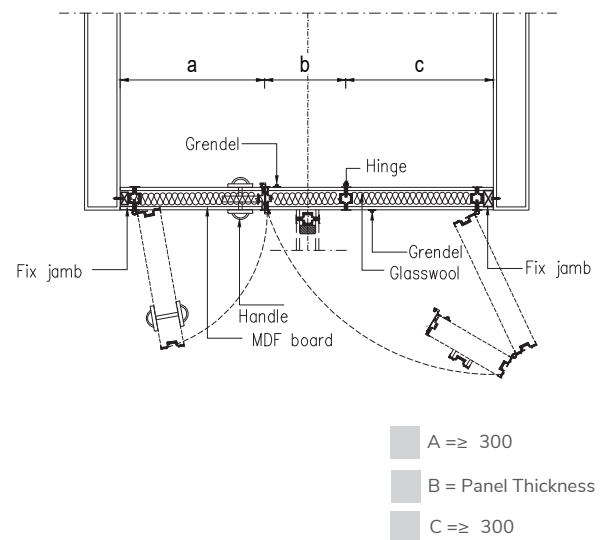
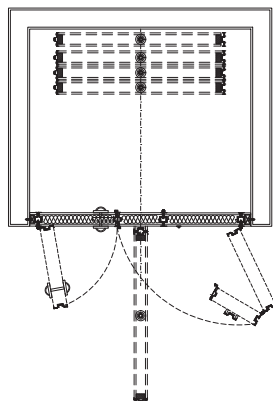
ORDINARY  
STACKING



PARALLEL  
STACKING

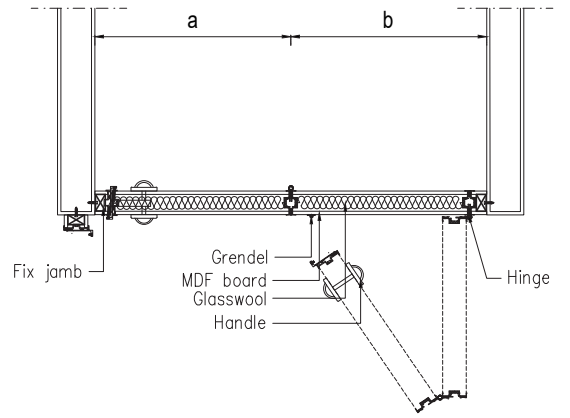
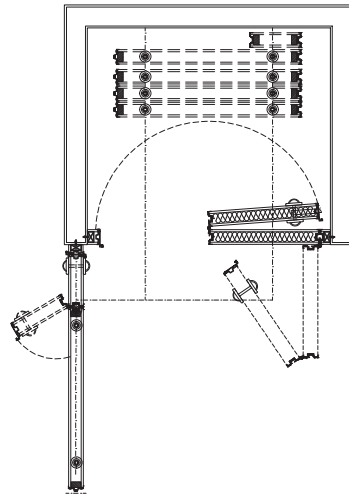


CENTER  
STACKING



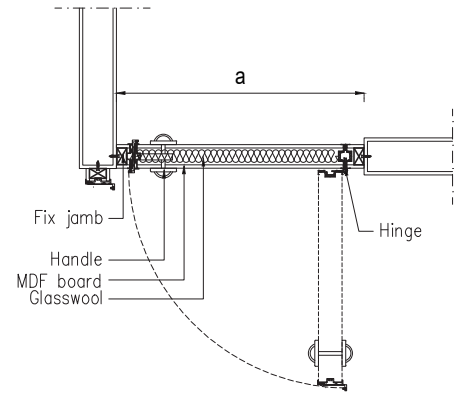
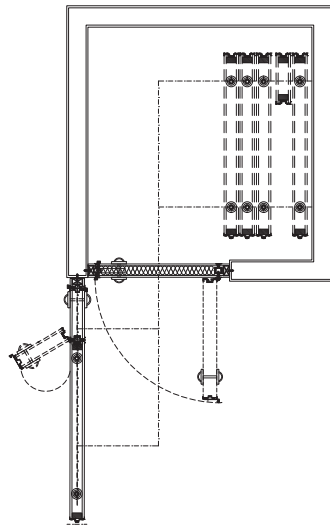


INDUCTION  
STACKING A



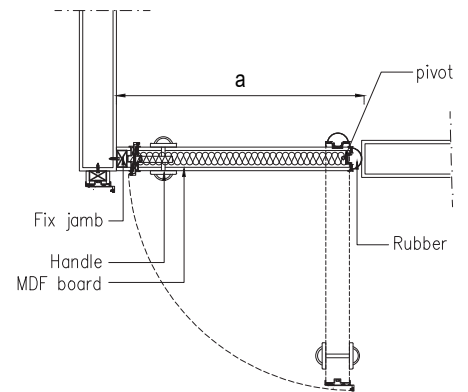
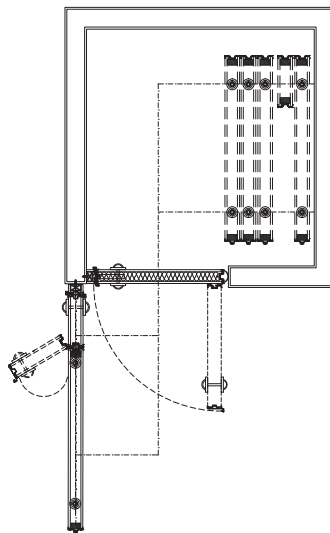
$A = B \geq 425$

INDUCTION  
STACKING B  
(HINGE STANDART)

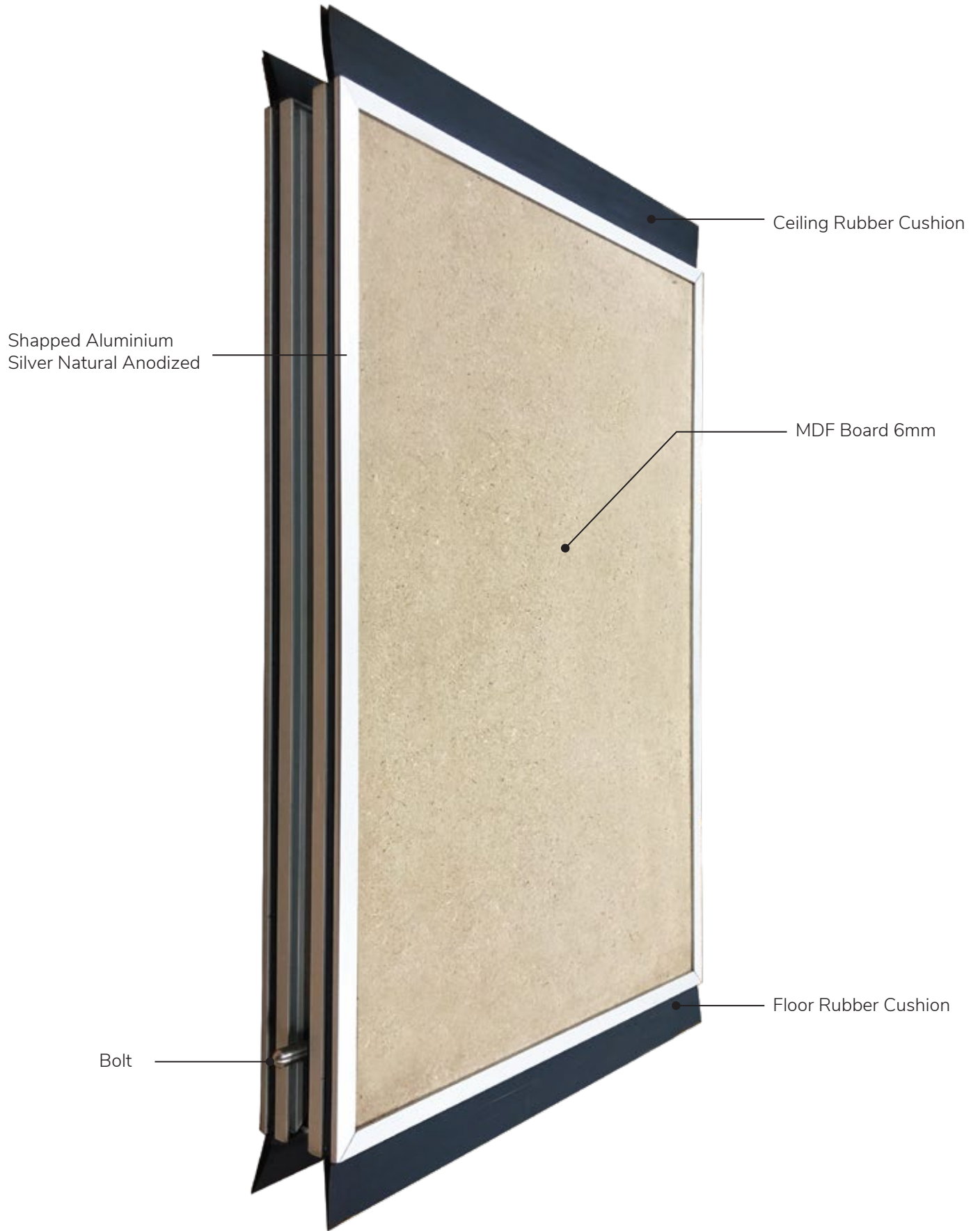


$A = \geq 800 \text{ Max } 1200$

INDUCTION  
STACKING B  
(PIVOT HINGE)



$A = \geq 800$







[www.sandei.co.id](http://www.sandei.co.id)

Instagram icon [sandeipartitions](#)



Visit Our Website