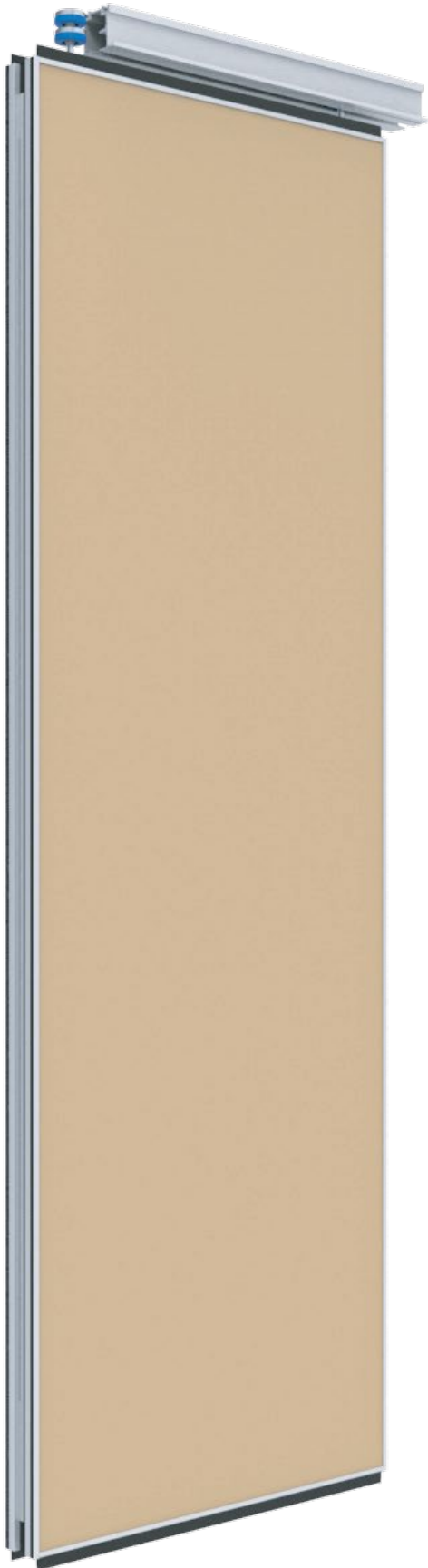


 sanderpartitions

OPERABLE WALL





PANEL TYPE

SC 100 H - STC 51

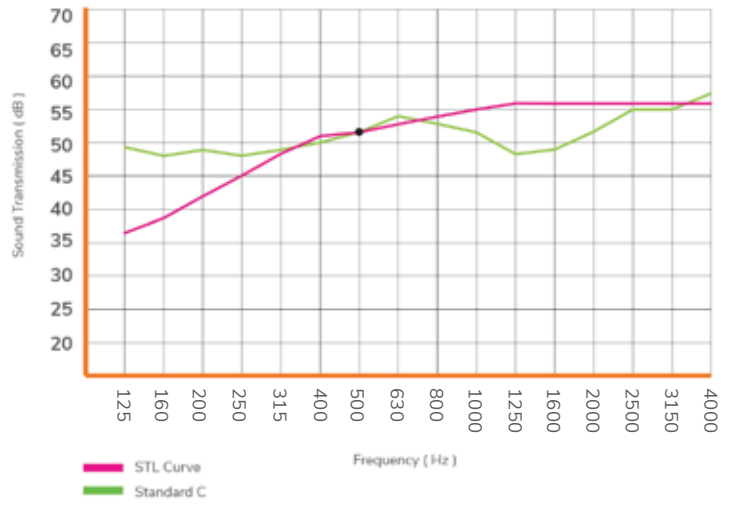
Flexibility, durable, with height up to 8 meters with sound reduction suitable for medium to large spaces, for instances, banquet halls, ballrooms, and conference rooms with lower ceilings.

Fleksibilitas, kekuatan, serta ketinggian hingga 8 meter dengan pengurangan suara maksimal sangat cocok untuk tempat yang besar seperti banquet halls, ballroom, dan ruang konferensi.

PANEL TYPE SC 100 H - STC 51

Operation Methods	Maximum Size	
	Width	Height
Cross Type		
Ordinary	1200 mm	7500 mm
Parallel		
Induction		
Center Stacking 2 Runner		
R Type		
Parallel	1200 mm	9000 mm
Center Stacking 1 Runner	900 mm	3000 mm

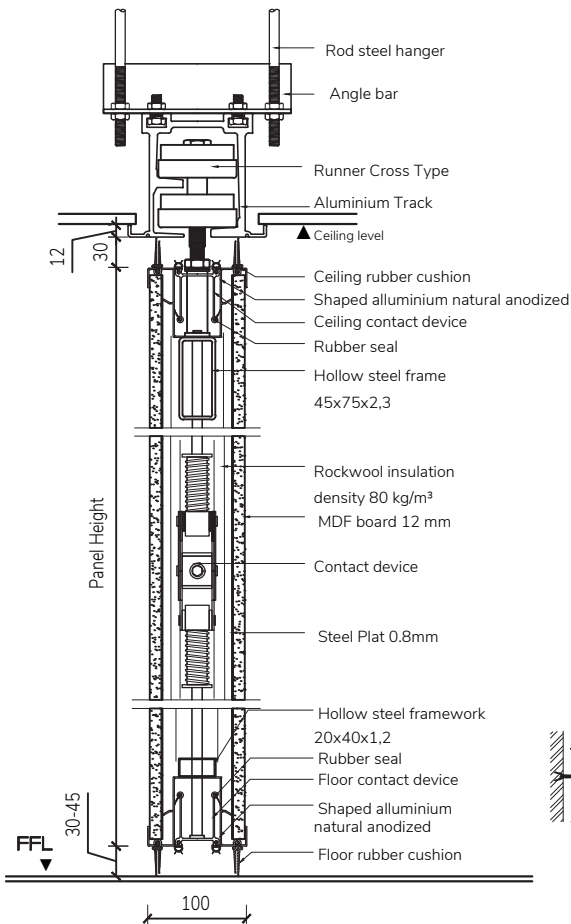
SOUND TRANSMISSION LOSS & STC RATING



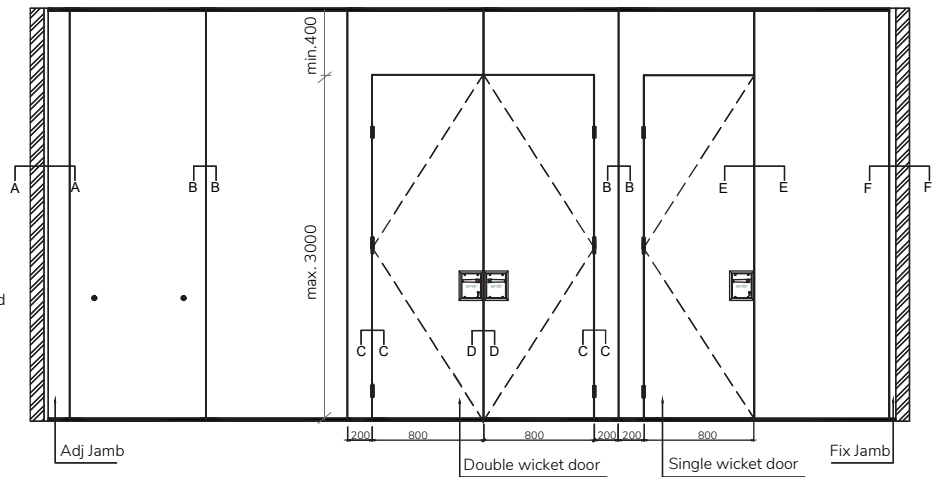
Weight Approximately : 45 kg/m²

SECTION DRAWING SC 100 H - STC 51

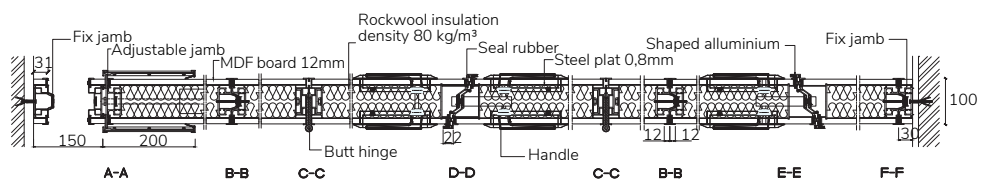
VERTICAL SECTION DRAWING



ELEVATION DRAWING



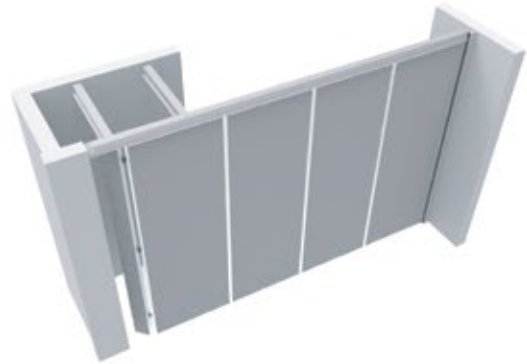
HORIZONTAL SECTION DRAWING



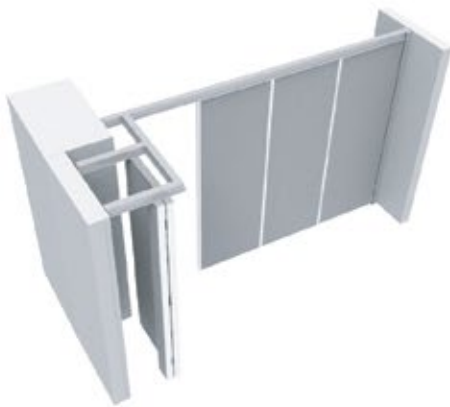
CROSS TYPE



Ordinary Stacking



Parallel Stacking

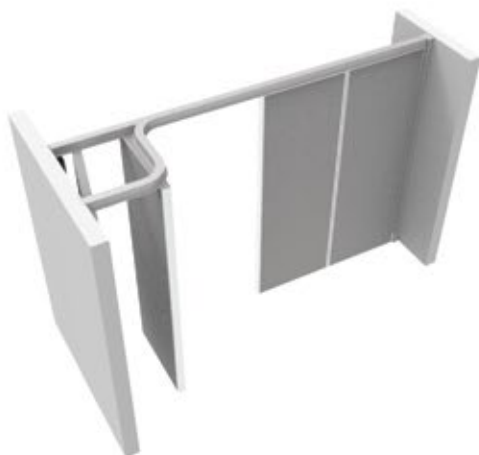


Induction Stacking

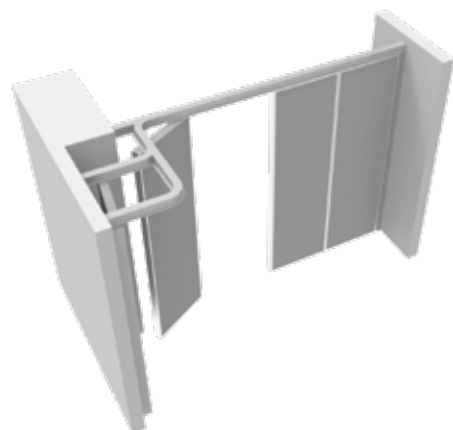


Center Stacking with 2 Runner

R-TYPE



Ordinary Stacking



Induction Stacking

CROSS TYPE

RHF - 300 kg	<p>Rails Aluminium anodized H-base 3-5 thk</p> <p>Runner Base : MC Blue Bearing : $\phi 40$ - 2pcs H. Density PTSE - bearing cover : $\phi 65$ - 2pcs Hanger bolt : Steel $\phi 14$</p>		
--------------	--	--	--

RHF - 400 kg	<p>Rails Aluminium anodized H-base 7-8 thk</p> <p>Runner Base : MC Blue Bearing : $\phi 47$ - 2pcs $\phi 52$ - 2pcs H. Density PTSE - bearing cover : $\phi 78$ - 2pcs Hanger bolt : Steel $\phi 16$</p>		
--------------	--	--	--

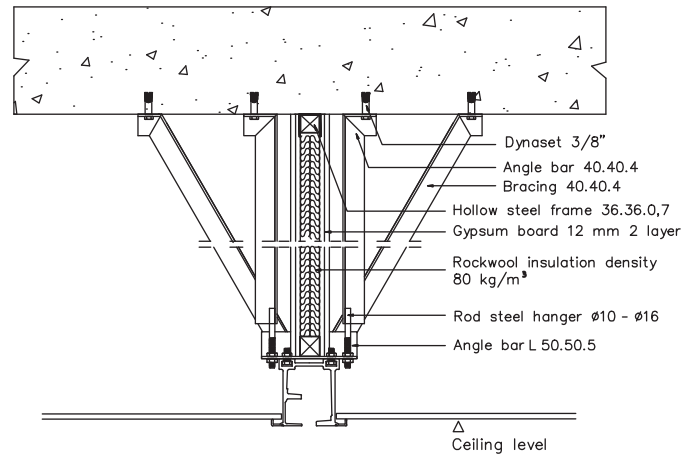
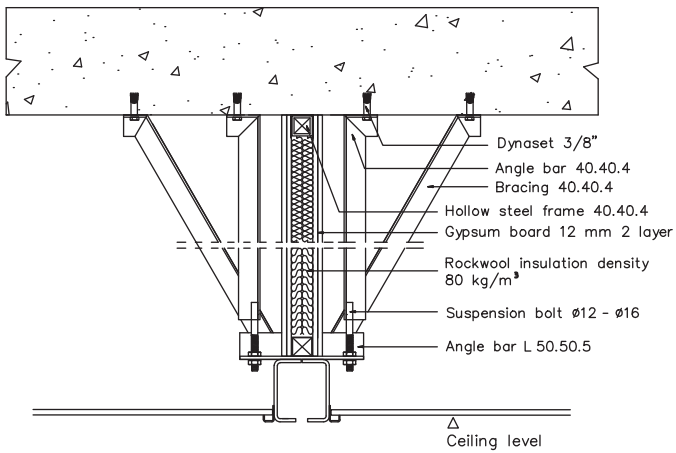
R-TYPE

R-300 kg	<p>Rails Aluminium anodized H-base 6 thk</p> <p>Runner Base : Aluminium Bearing : $\phi 26$ - 4pcs $\phi 30$ - 4pcs Hanger bolt : Base Ring Steel $\phi 14$</p>		
----------	--	--	--

R-600 kg	<p>Rails Steel (ST 45) H-base 6 thk</p> <p>Runner Base : Steel Bearing : $\phi 35$ - 4pcs $\phi 40$ - 4pcs Hanger bolt : Base Ring Steel $\phi 16$</p>		
----------	---	--	--

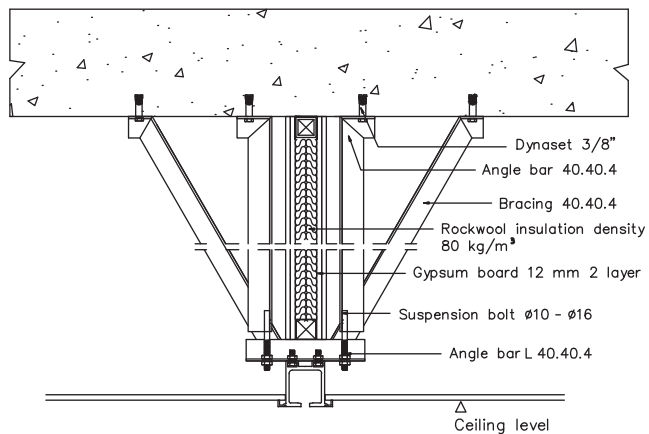
SOUND INSULATING ABOVE CEILING

SINGLE LAYER GYPSUM

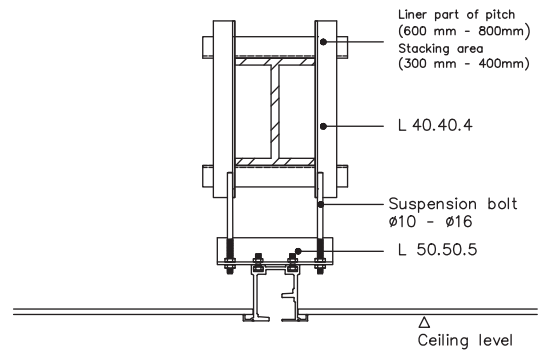


CONSTRUCTION SUPPORT

CONCRETE



NON CONCRETE



EXTRA FEATURE



Door Handle

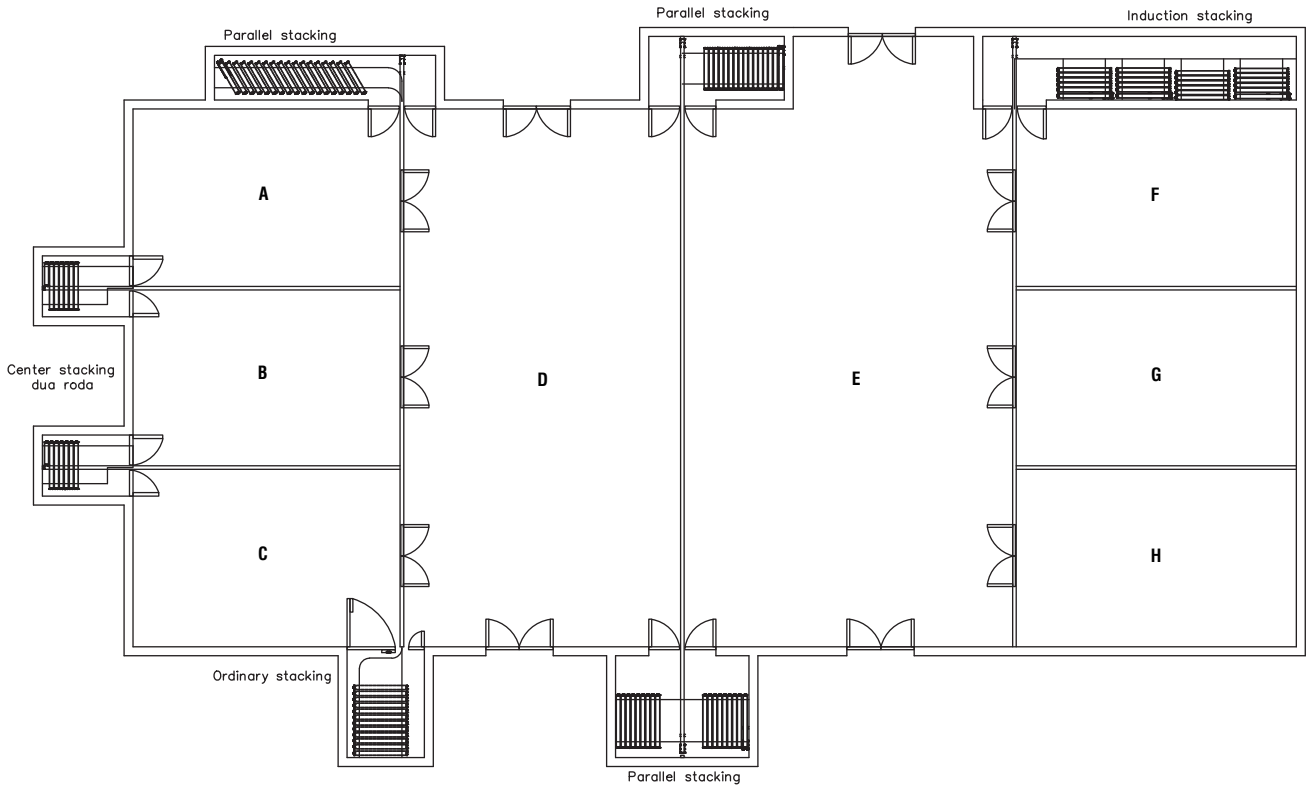


Crank Handle

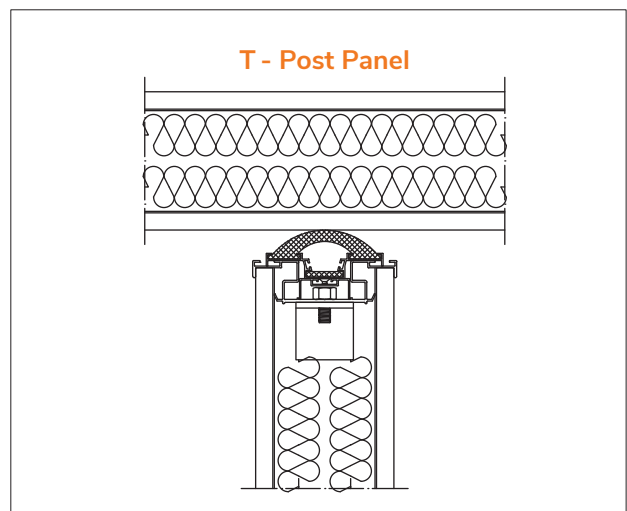
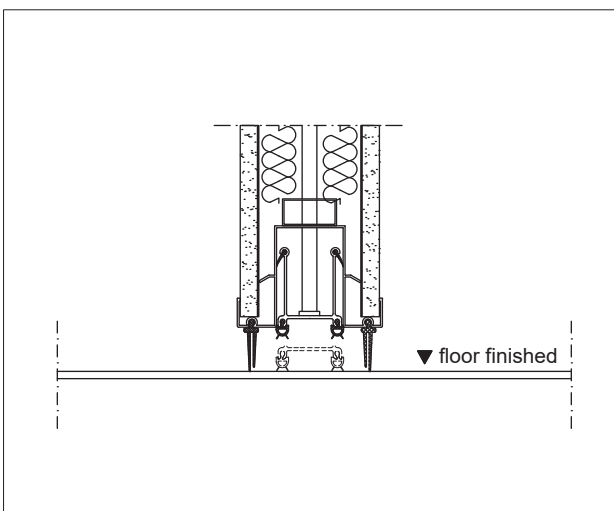
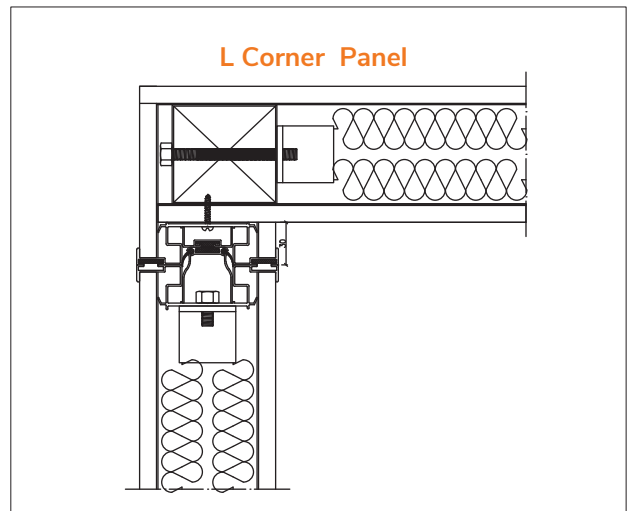
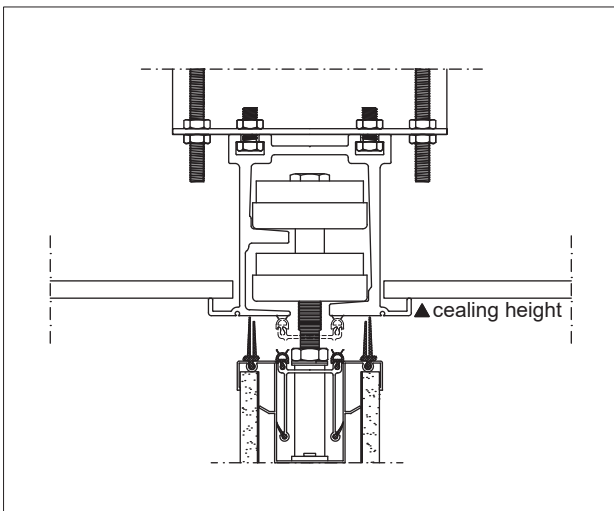


Crank Handle

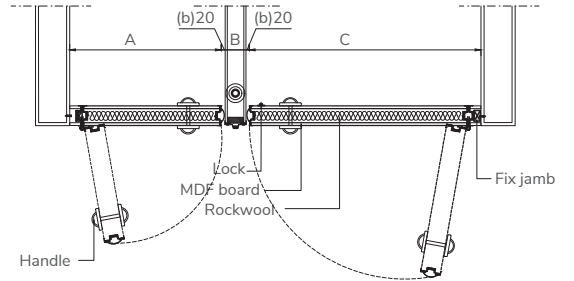
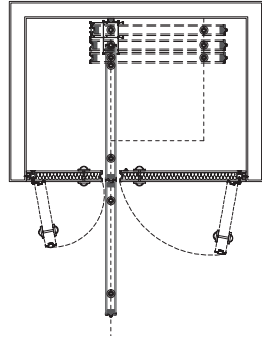
STACKING AREA OPTIONS



DETAIL

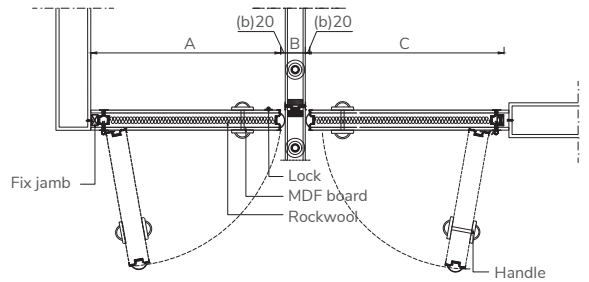
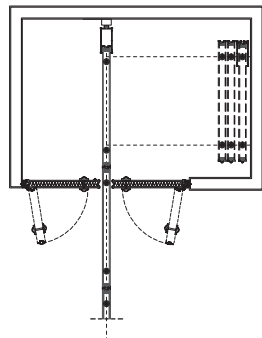


ORDINARY
STACKING



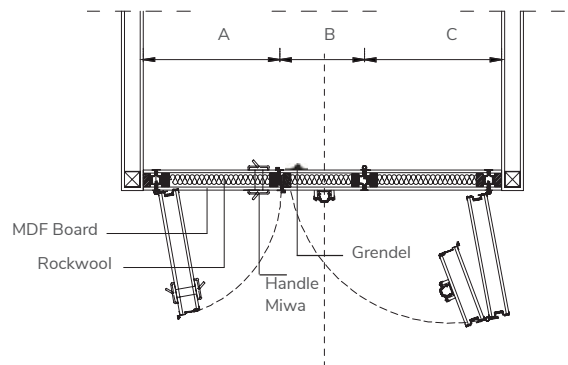
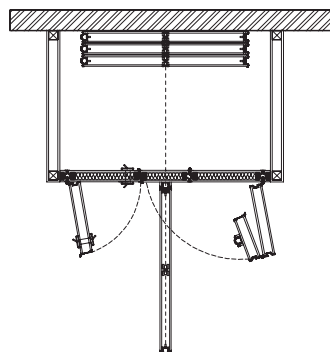
- $A \geq 300$
- $B = \text{Panel Thickness} + 40$
- $C \geq 300$

PARALLEL
STACKING



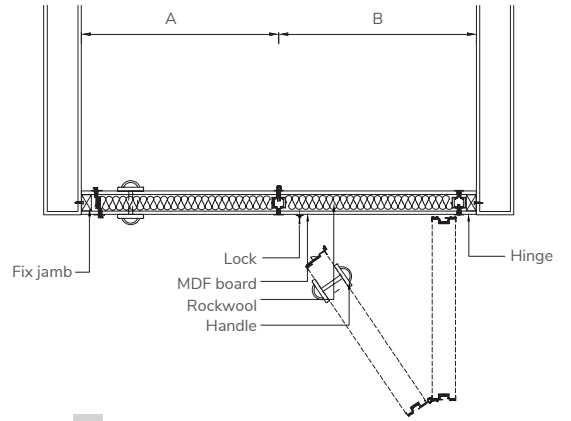
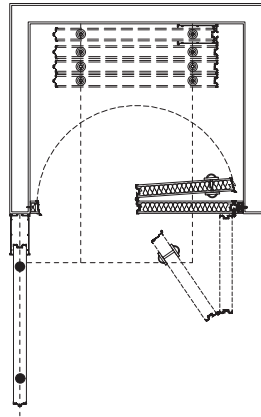
- $A \geq 300$
- $B = \text{Panel Thickness} + 40$
- $C \geq 300$

CENTER
STACKING



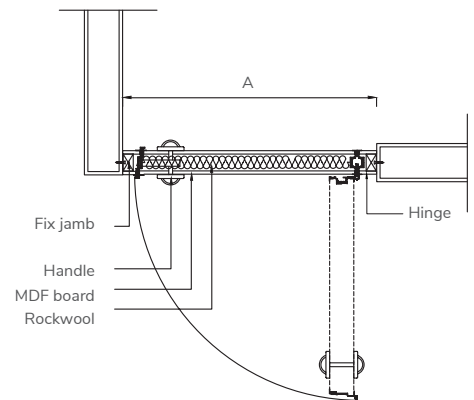
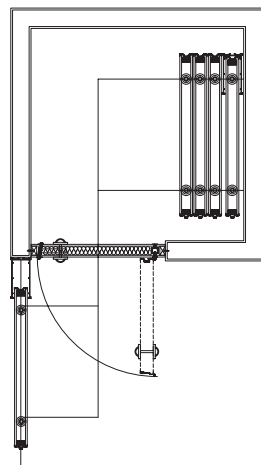
- $B = \text{Panel Thickness} + 40$
- $A \geq 300$
- $C \geq 300$

INDUCTION
STACKING A



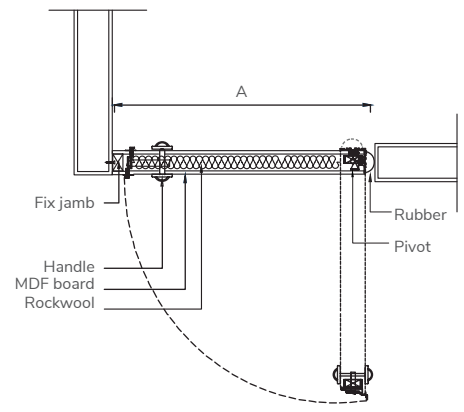
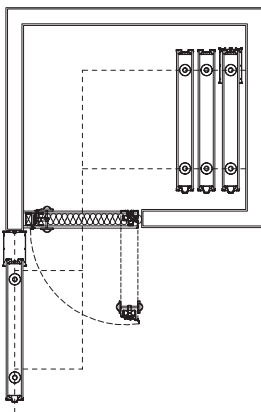
A = B ≥ 425

INDUCTION
STACKING B
(HINGE STANDART)

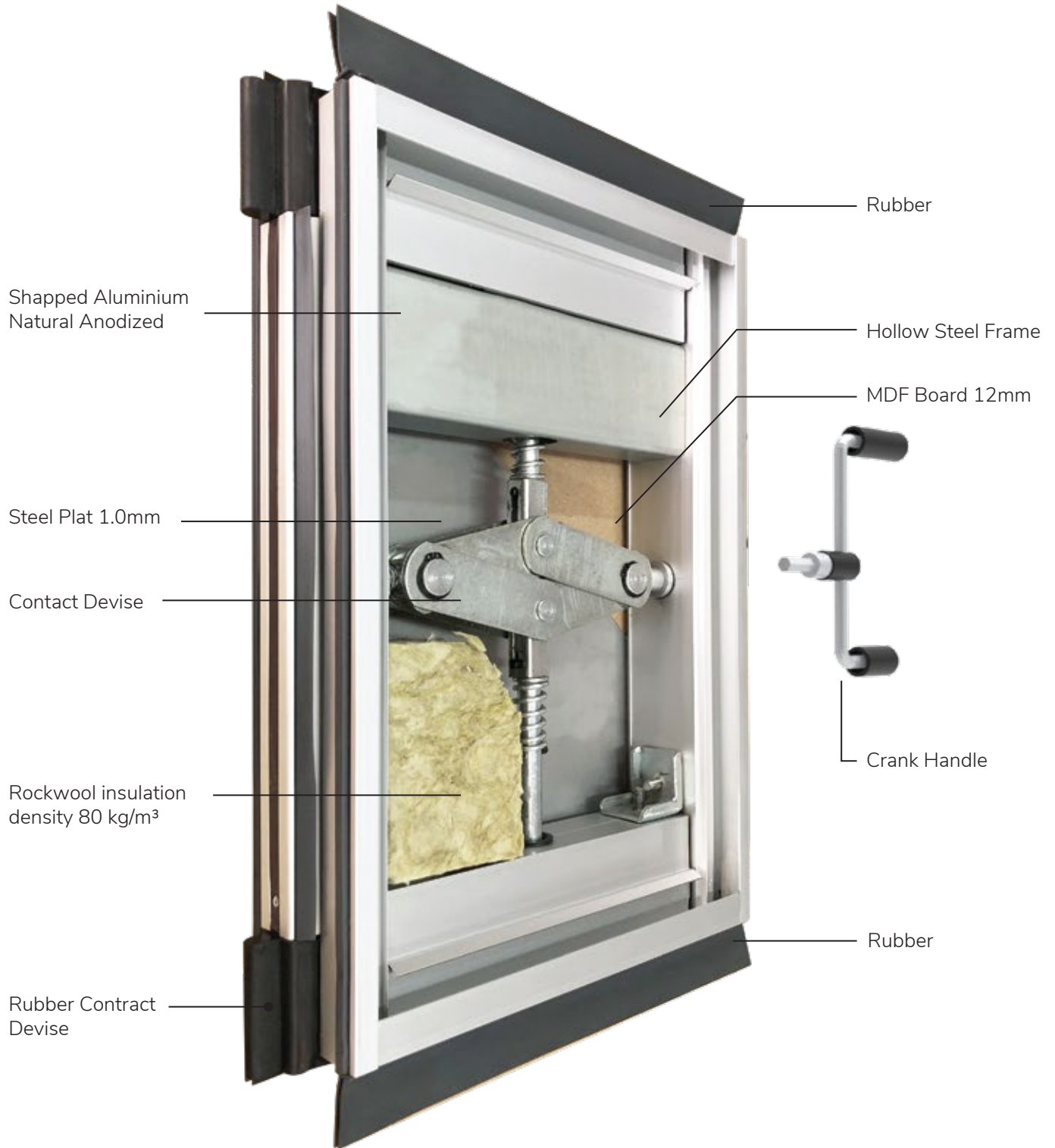


A = ≥ 800 max 1200

INDUCTION
STACKING B
(PIVOT HINGE)



A = ≥ 800







www.sandeipartition.com

Instagram icon sandei_official



Visit Our Website